



A Rapidly Enlarging Neck Mass: A Case Report

John Smith, MD¹; Jane Doe, PhD²; Frederick Smith, MD, PhD^{1,2}
¹University of Affiliation, ²Medical Center of Affiliation

ABSTRACT

Click here to insert your Abstract text. Type it in or copy and paste from your Word document or other source.

This text box will automatically re-size to your text.

To change the background color of this text box: Double-click near the edge to open the Format tool, select 'Colors and Lines', and change the fill color to whatever you like.

To change the font style of this text box: Click on the border once to highlight the entire text box, then select a different font or font size that suits you.

This text is in Arial 28pt (equivalent to 34pt when printed) and is easily readable up to 6 feet away on a 36" x 60" poster (file printed at 120%).

INTRODUCTION

Click here to insert your Introduction text. Type it in or copy and paste from your Word document or other source. Click once on the dashed border to highlight then drag the bottom edge up to fit. Or change the font size to fill the box.

To have the box automatically re-size to your text: Double-click near the edge to open the Format tool, and select 'Text Box', then check "Resize AutoShape to Fit Text".

To change the background color of this text box: Double-click near the edge to open the Format tool, select 'Colors and Lines', and change the fill color to whatever you like.

To change the font style of this text box: Click on the border once to highlight the entire text box, then select a different font or font size that suits you. This text is in Arial 28pt (equivalent to 34pt when printed) and is easily readable up to 6 feet away on a 36" x 60" poster (file printed at 120%).

RESULTS

Genigraphics has provided this template to assist in preparation of a medical or scientific research poster. The dimensions are set to 30" high by 50" wide but prints can be scaled up proportionally to 36" x 60" (file printed at 120%), 48" x 80" (160%), or even as large as 54" x 90" (180%). When you order your print we will know to scale the file to the print size you specify.

For other sizes, please visit our website at www.genigraphics.com or send an email request to info@genigraphics.com or give us a call toll free at **1.800.790.4001**.

The various elements and text boxes included in this template are examples of what we commonly see on posters of this kind. They are simply placeholders and you should feel free to add, delete, re-arrange, re-name, or re-size as best suits your needs.

RESULTS

Choose Genigraphics to print your poster and we will perform a free design review and advise you if we see anything that may be a concern for printing.

We print directly from PowerPoint so your poster will look just like it does on screen. Other printing outlets (Kinko's, for example) convert your file to another format prior to printing. This can result in elements shifting, loss of effects, or altered colors. By printing from the same version of PowerPoint that your file was created in, Genigraphics gives you the most accurate reproduction available.

DISCUSSION

Click here to insert your Discussion text. Type it in or copy and paste from your Word document or other source. Click once on the dashed border to highlight then drag the bottom edge up to fit. Or change the font size to fill the box.

To have the box automatically re-size to your text: Double-click near the edge to open the Format tool, and select 'Text Box', then check "Resize AutoShape to Fit Text".

To change the background color of this text box: Double-click near the edge to open the Format tool, select 'Colors and Lines', and change the fill color to whatever you like.

To change the font style of this text box: Click on the border once to highlight the entire text box, then select a different font or font size that suits you. This text is in Arial 28pt (equivalent to 34pt when printed) and is easily readable up to 6 feet away on a 36" x 60" poster (file printed at 120%).

CONTACT

<your name>
<organization name>
Email:
Phone:
Website:

METHODS AND MATERIALS

Click here to insert your Methods and Materials text. Type it in or copy and paste from your Word document or other source. Click once on the dashed border to highlight then drag the bottom edge up to fit. Or change the font size to fill the box.

To have the box automatically re-size to your text: Double-click near the edge to open the Format tool, and select 'Text Box', then check "Resize AutoShape to Fit Text".

To change the background color of this text box: Double-click near the edge to open the Format tool, select 'Colors and Lines', and change the fill color to whatever you like.



Figure 1. Label in 24pt Arial.



Figure 2. Label in 24pt Arial.



Figure 3. Label in 24pt Arial.

	A	B	C	D
Patient 1				
Patient 2				
Patient 3				
Patient 4				

Table 1. Label in 24pt Arial.

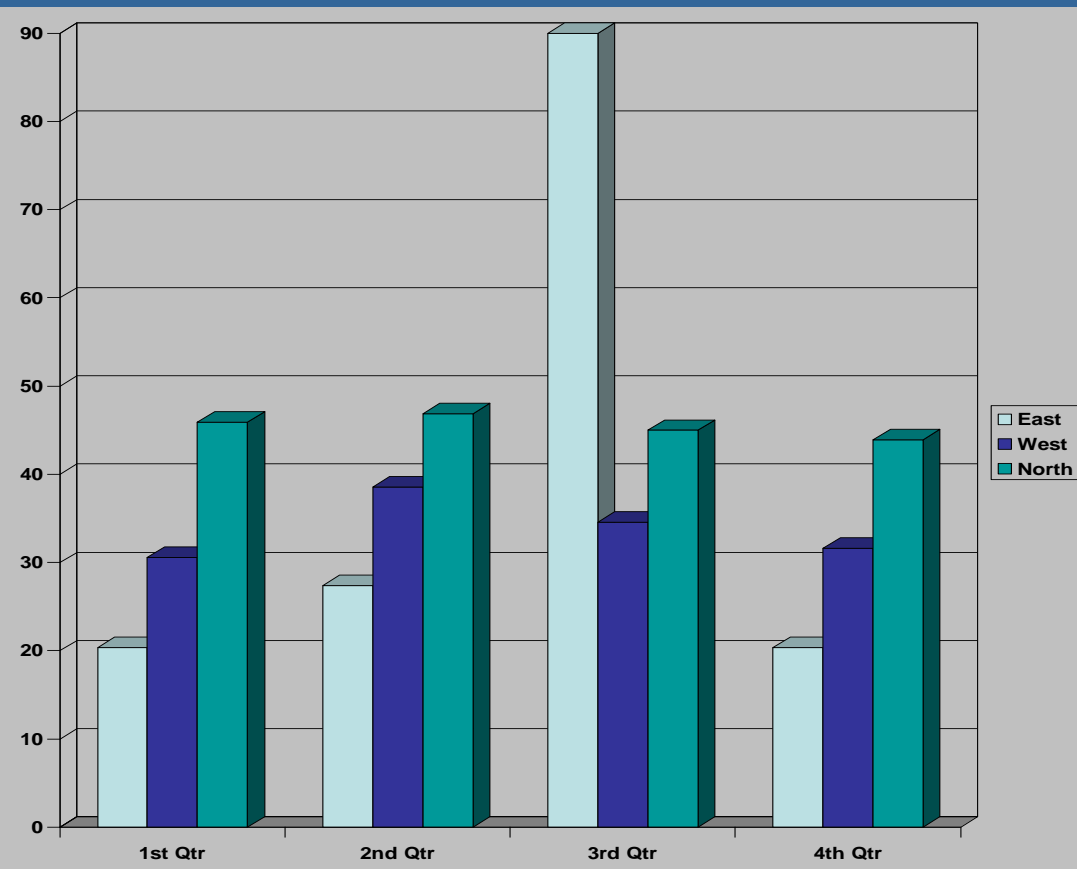


Chart 1. Label in 24pt Arial.

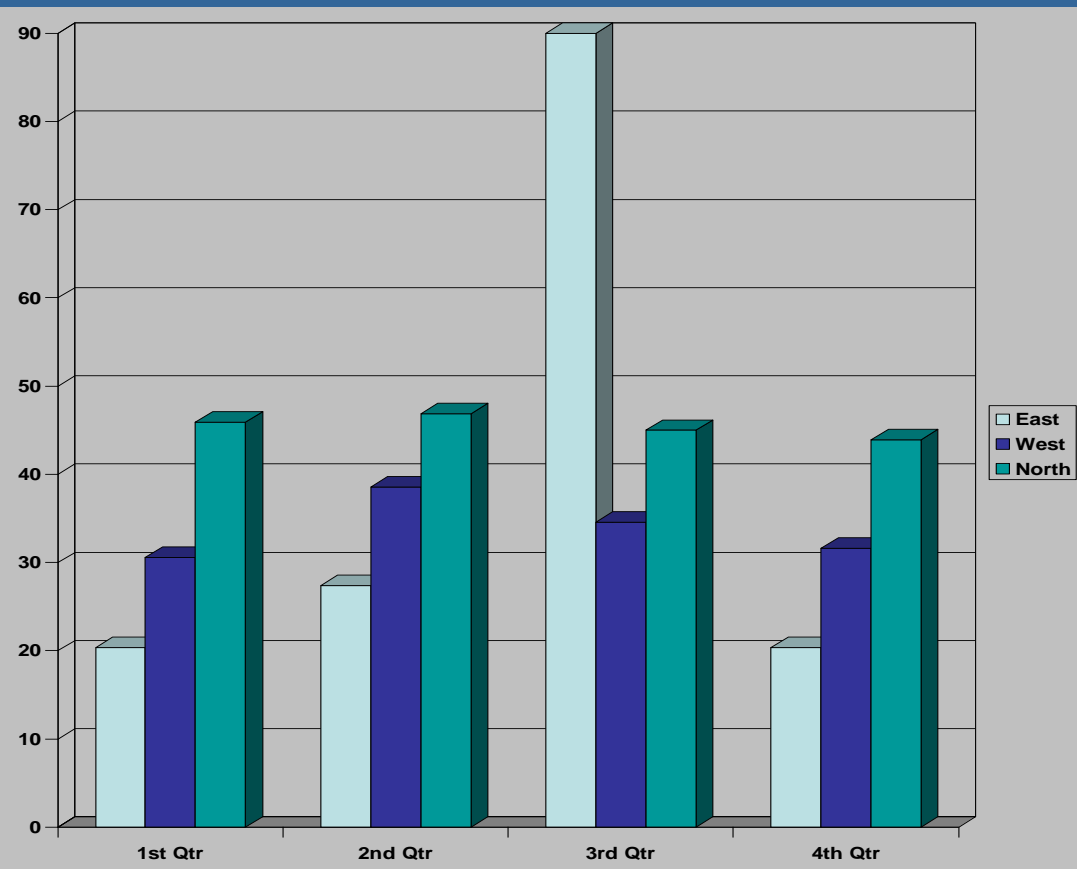


Chart 2. Label in 24pt Arial.

CONCLUSIONS

Click here to insert your Conclusions text. Type it in or copy and paste from your Word document or other source.

Click on the border once to highlight and select a different font or font size that suits you. This text is in Arial 28pt and is easily readable up to 6 feet away. Try to stay between 24pt – 36pt for best viewing.

REFERENCES

- Click here to insert your References. Type it in or copy and paste from your Word document or other source.
- Click on the border once to highlight and select a different font or font size that suits you. This text is in Arial 20pt and is easily readable up to 4 feet away. Try to stay between 16pt – 24pt for best viewing.